



Fall, 2008

Contents

Calendar
Chorus Chatter
IBOD Elections
Membership Retention
Region 13 Education
RMT Meeting Highlights
SAI Convention News
The Stages of Performance

Please feel free to make extra copies for your chorus. The [PDF version](#) will probably print best.

SAI Convention

The 2009 Sweet Adelines International Convention begins Tuesday, Nov. 4 with Showcase 2008 and concludes five action-packed days later with the Coronet Club's wonderful show.

If you are lucky enough to be heading to Hawaii, here are some items of interest for you:

- * Most times listed below are Pacific Standard Time. Hawaii is two hours behind us and we've "converted" the times for you when appropriate!
- * A **Pep Rally** will be held for Pacific Sound, LiveWire and Mojo on Tuesday, 11/4. For more information, [see below](#).
- * **Mojo** is contestant #1 and is scheduled to be onstage at 1:00

Putting the Pieces Together: *The State of Education in Region 13*

The paramount focus in North Pacific Region #13 is education. Our region continues to provide education opportunities for all members. Below is a list of our current and proposed Regional Education events.

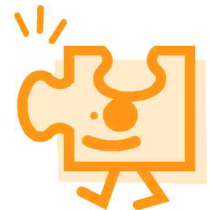
Regional Convention/Competition

Region 13 offers classes free to members during convention weekend. In 2008, the focus of instruction was the expression category. We also encourage choruses and quartets to compete so they have an assessment tool to develop a guideline for future focused education and coaching.



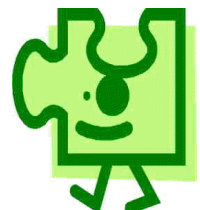
Together and Growing (TAG) Visits

Every other year, Region 13 offers individual chorus visits. The purpose of TAG is to motivate members and teams to embrace the journey to personal and musical growth in order to develop into vibrant and entertaining performers in the barbershop style. The Region Education Coordinator and the TAG program Coordinator assign appropriate faculty based on the requested needs of the individual chorus. The region funds transportation and material costs and the chorus is expected to cover faculty housing and meals.



Area Schools

Area schools are scheduled in years opposite TAG visits. Region 13 offers an area school in three geographic locations within the region: Western Washington, Eastern Washington, and Alaska. An individual chorus hosts the school and may



pm PST on Wednesday, 11/5.

* **LiveWire** is contestant #15 and is scheduled to be onstage at 3:45 pm PST later that day.

* **Pacific Sound Chorus** is contestant #13 and is scheduled to be onstage at 4:13 pm PST on Thursday, 11/6.

Stuck "state-side"? You can still find out what is happening:

* Watch online! Webcast schedules and information is available [here](#).

* Visit the [SAI Convention page](#) site for the convention schedule, chorus and quartet orders of appearance, hotel information, and more!

* If you visit the [SAI Competition page](#), you can find information about onstage times for the semi-finals and finals, as well as the contest judges. You can also sign up to have the scores automatically emailed to you! Look in the yellow, right-hand column for the **Subscribe Now** link.

Good luck to all of our Region 13 competitors!

Hawaii Pep Rally

Come and cheer on our international competitors at a Pep Rally in their honor on Tuesday, November 4.

The rally will honor **Pacific Sound**, **Mojo** and **LiveWire**, and will take place at the end of Pacific Sound's rehearsal on Tuesday. Join us outside their rehearsal room (Tapa Room at the Hilton Hawaiian Village--Tapa Tower) at 4:30 pm to "find out the scoop", then be ready to have some fun as we offer our best wishes.

If you have questions, contact [Jan Matthews](#).

suggest class curriculum. The Region Education Direction Team organizes and develops the curriculum and assigns appropriate regional faculty to facilitate the classes. The host chorus plans all logistics associated with the event (i.e., publicity, venue locations, registration, and meals). A registration fee for individual members is charged to attend the school. In 2009, the Education Direction Team will develop a plan to provide an incentive for the hosting chorus.

Directors/Musical Leaders Workshop

This workshop is held once a year and includes front-line directors, associate and assistant directors, DCP members, section and assistant section leaders, and choreographers. An International faculty member is hired to work with the Region Education Direction Team in developing class curriculum and facilitating the workshop. Previously this workshop was only offered to directors but has been expanded to include all musical leaders within the past two years and evaluations show positive feedback in this area. A registration fee for individual members is charged to attend the workshop.



Summer Enrichment Training (SET)

SET is an annual three-day Regional Education Symposium. The region hires International faculty to provide class curriculum and our Regional faculty also provides instruction. This workshop is very well attended by members and offers a multitude of education including coaching by the International faculty for the Internationally bound chorus and quartet(s). In September 2008, this workshop was jointly held with Region 26, and Rumors quartet was our International faculty. Approximately 425 members attended.



Raise Your Level Campaign

The Region 13 Education Direction team is developing a two-year "Raise Your Level Campaign" for individual choruses and quartets. This campaign idea is based on feedback provided to the Education Coordinator by International judges during past competitions. It is Region 13's vision to reach every chorus and quartet to provide appropriate instruction and analysis to raise their performance levels. We propose to invite the region's judges, coupled with regional faculty, to target instruction for reaching the next level. The first step in developing this campaign will be to schedule a brainstorming session with all regional judges and faculty. The Education Direction team will keep you posted as this campaign develops.



submitted by Patty Martin, Education Coordinator

[\[return to top\]](#)

Membership Retention Tips



By the way, all of Pacific Sound's rehearsals are open to the public, so feel free to stop in:

* Tuesday, 11/4, 3:00-5:00 pm; Tapa Room at the Hilton Hawaiian Village, Tapa Tower

* Wednesday, 11/5, 5:00-7:00 pm; Ni'ihau 312 Room at the Convention Center

* Thursday, 11/6, 12:00-1:00 pm; Tapa Room at the Hilton Hawaiian Village, Tapa Tower

The Stages of Performance

One of the most common comments the RMT receives from the judges following Regional contest is that our choruses and quartets are "too careful" in their performances. When your singing doesn't reach beyond the edge of the stage, the audience misses out on the thrill and intimacy of the performance. Here are some tips, to help you conquer this obstacle, excerpted from "*The Performer Prepares*", by Robert Caldwell.

"The performance begins long before you walk out on stage. Special concerns begin the moment you decide to perform and others germinate while you select the music, rehearse the music, perform the music, and then live with the performance afterward. You will have concerns at each stage and each will need to be imagined fully.

"As you plan the music, your choices should be based on qualities you can commit to, otherwise you may find yourself stuck. If you choose music without enough challenge, you may lose interest, for example, or if you choose music too difficult for you, you may set yourself up for disappointment.

This time of year, many choruses are sponsoring recruitment programs such as "Ready, Set, Grow!" and guest nights, which hopefully will result in new members on the risers. Be ready for these excited, enthusiastic members with a strong "rookie" program to bring them up to speed on our unique barbershop musical skills, as well as information about your chorus' own culture, history, and expectations. New members need STRONG mentorship for up to five years. Make sure they get it!

Sometimes, however, choruses get so caught up in recruitment campaigns that retention efforts fall by the wayside--a big mistake! When a seasoned member leaves, not only does it reduce the size of the chorus, but she may take with her years of musical experience and knowledge. What is your chorus doing to recognize and reward the efforts of current members? Is each member feeling valued and needed?

Choruses reach their musical potential by retaining present members as a solid core, then steadily and slowly adding new members. When one member leaves, it takes TWO MORE to show GROWTH. Recruitment programs are vital, and go hand-in-hand with retention efforts. If you need ideas, support, or information, please contact [Cris Turner](#) (509-627-2310), Membership Coordinator.

[return to top]

RMT Highlights

(Note: highlights from TWO Regional Management Team meetings are included below!)

May, 2008

The RMT met on 5/17/08 in Anchorage, AK. Agenda items included:

Convention 2008: Discussion on convention weekend. Attendance was down but we met the rooms required by the contract with the Doubletree. Issues regarding bringing outside food into hotel public areas arise; it is ok in hotel rooms but not in lobby or ballrooms. Webcast had issues with freezing video; connection issues due to data rate. Thirty-eight Webcast surveys were received. Education class on Friday morning had good attendance; over 100. Director-Cam was better than prior year; waiting for feedback from Directors regarding quality and usefulness.

SET 2008: Curriculum development with Rumors is complete. Finances are still in discussion with Region 26.

Chorus Contact Information: Discuss issues regarding obtaining contact information from Chapters in May following elections. Assign RMT members to Chapters to gather info and any changes during the year.

Nominating Committee: Jan Matthews volunteered to head committee for 2009 - 2011 elections. Positions open are Finance, Communications, Director and Team Coordinators.

"If your rehearsals seem undesirable to you, it probably means you have other ways to rehearse that you are not using, but should. Or it could mean that you have concerns about the first stage of the performance, planning the music, and performance that have not yet been met.

"Your performance begins in your imagination. If you look toward your future performance and see something dreadful, your image of the performance will not be one you can commit to one hundred percent – who would commit to something dreadful? If you see a vague idea of your performance, it will not inspire you. However if you see a rich performance, full of what you want, it certainly will influence your work favorably. And if you see an intense, vast image of the performance that covers everything about the performance, and is so imbued with qualities you deeply desire that you are physically drawn to it, you will very likely achieve those qualities and will deliver a beautiful performance. (A highly energized, exciting performance!)"

submitted by Karen Leet, Directors Coordinator

IBOD Elections

Has your chorus made their selections for the upcoming SAI International Board of Directors (IBOD) elections?

If your chapter president or team leader has not mentioned it to your chorus, you might want to ask them about it.

The ballot with your chorus' choices is due at headquarters by 3:00 pm on December 3. You can see the slate of officers [here](#).

If you have any questions, contact International headquarters at 800.992.7464, x139 or 918.622.1444, x139.

And remember, it DOES make a difference whether your chapter votes or not. Let your (harmonious) voices be heard!

Standing Rules: Need to be updated; most recent version (2004) is out of date. Discuss identified changes that need to be included.

Quartet & Chorus News: Lower number of number of Quartets competed. Need educational plan for regional quartets. Prospective Majestic Mountain is progressing. Port of Angels is working on membership. Grand Olympic reports they are growing.

September, 2008

The RMT met on 9/19/08 in Richmond, BC (prio to SET). Agenda items included:

Convention 2008: No outstanding issues. Education classes well received; issue of conflict with chorus rehearsals is being worked out.

RMT Nominations: Three applications received to date. Deadline for applications is September 30th.

Pep Rally: Discussion regarding planning Pep Rally in Hawaii for Region 13 competitors, PSC, LiveWire and Mojo. Sue Hahn is working on coordinating, with Jan Matthews assisting. Tentative schedule is for Tuesday, 11/04, in the afternoon.

Chorus & Quartet News: Coeur d'Alene has a new director. Patty Martin, Education Coordinator, is making the rounds and visiting Chapters. Discussed rumors that quartets are performing in public without auditioning for their chorus. Discussed public performance guidelines regarding Quartets representing Region 13.

TAG Visits: Choruses are scheduling them and they are going well. Less than five choruses have not requested them.

Conventions 2009 - 2014: Hotel and facility contracts are signed, with 2010 being in Anchorage; all other dates are in Spokane.

Finance Report: We are in good condition. Discussed and approve the purchase of a laptop computer and AV equipment for Education and a laptop for Finance.

submitted by Jan Matthews, Marketing Coordinator

[\[return to top\]](#)

Chorus Chatter

Alaska Sound Celebration Chorus

"Spunk...style and attention to detail." That's how a local arts critic described [Alaska Sound Celebration's](#) recent concert, "*Celebrate the Music*". Our program consisted of songs from the movies; everything from *Singing in the Rain* to *Rent* to the Academy Award-winning *Chicago*.

Access Your SAI Member Information Online

Members can now update their personal information online, including name, address, e-mail address and phone numbers! Log on to the following Web page to make corrections to your membership information: http://64.207.244.220/sai/members_online/members/viewmember.asp?action=start

Please note that when logging in, if your member number begins with a "0" you must omit it; for example if your member number is 01234, the log-in page will only accept it if it is entered as 1234.

When submitting email updates to International please include your member number, name and chapter name with your updated information.

Regional Calendar

2008 OCTOBER

October 30-November 2: Great Pacific Harmony ~ Pan Pacific Convention; Honolulu, Hawaii. Something to do before the SAI Convention! Click [here](#) for more info.

NOVEMBER

November 4-8: SAI International Convention;
Honolulu, Hawaii

November 15: Blue Mountain Chorus Show; 2:00 pm; Dayton High School Auditorium; Dayton, WA

November 15: Blue Mountain Chorus Show; 7:00 pm; Waitsburg High School Auditorium; Waitsburg, WA

November 22: Blue Mountain Chorus Show; 7:00 pm; McLoughlin High School; Milton-Freewater, OR

November 22: Jet Cities Chorus Community Show. 7:00 pm; Steel Lake Presbyterian Church in Federal Way, WA. For more information, contact



Photo courtesy of [John Harris](#)

The real-life critic had two counterparts on stage--a certain Mr. Joe BidenMyTime and his nemesis, Ms. Sarah Van Halen--vying for Movie Critic of the Year. They provided a spirited "thumbs-up/ thumbs-down" analysis of the movies in which our songs were featured.

This was also our fourth annual Sing for Scholarship competition in which five incredibly talented high school students delivered their own music from the movies.

For the chorus, the real star of the show was our brand new set of choreo-friendly, squeak-free SICO risers, funded by a nearly \$25,000 grant from the Rasmuson Foundation, a generous supporter of the arts in Alaska.

The show was free, with donations cheerfully accepted. Quipped one little girl about seven years old, "You guys are really great, but I only have a dollar." Judging by the enthusiastic applause and good press we received, we believe she got her dollar's worth.

Submitted by Terry Alexander

Blue Mountain Chorus



The Soroptomists of Walla Walla Valley held their 1st Annual Women of Distinction awards banquet on October 4. Of the 11 incredible "ordinary women working in extraordinary ways" nominated, [Blue Mountain Chorus](#) co-founder, former director, and current member **Darlene Filla** was named one of three Women of Distinction.

Nominated by former member and tenor to Darlene's bass in Doubletake Quartet, Judy Hicks,

DECEMBER

December 5-6: Fairbanks Frontier Chorus Show, "Sounds of Christmas"; Pioneer Park Civic Center; Fairbanks, AK. For more information, contact [Mary Anne Laroe](#). This is a joint production with Greatland Sounds Chapter (BHS).

December 6: Seattle Shores Chorus Show and Lasagna Dinner. Shoreline Christian Church, 14800 First Avenue NW, Shoreline, WA. For more information, contact [Carol](#).

December 7: RiversEdge Chorus Christmas Show, "Christmas! It's In The Bag!".. 3:00 and 7:00 pm; Millwood Community Presbyterian Church; Spokane Valley, WA. Tickets: \$5.00. For more information: (509) 323-9059.

December 16: Pacific Sound Chorus 2nd Annual Christmas Show; 7:00 pm; Eastshore Unitarian Church, 12700 SE 132nd Street in Bellevue. Click [here](#) for a flyer! For additional information, email holiday@pacificsound.org.

2009

JANUARY

January 10: InTune Newsletter deadline for winter issue; questions and articles should go to [Nancy Gott](#).

FEBRUARY

February 21: Chuck Green Workshop: Compellingly Attractive Chorus Rehearsals. This workshop is open to BHS and SAI members and is sponsored by the Evergreen District. Chuck is well known for his strategies that hit the issues of failing attendance and ember boredom head on! Click [here](#) for a flyer.

APRIL

April 2-5: Region 13 Annual Convention (SAI); Spokane, WA

April 23-26: Region 26 Annual Convention (SAI); Calgary, AB

MAY

May 9: InTune Newsletter deadline for spring issue; questions and articles should go to [Nancy Gott](#).

May 14-17: Region 24 Annual Convention (SAI)

JULY

July 17-19: Harmony College Northwest (HCNW), Tacoma, WA.



Darlene was recognized for her creativity, inspiration and

dedication to the women who have been members of the Blue Mountain Chorus Sweet Adelines.

As Judy stated in her nomination, "When Darlene directed the chorus, she felt like her role was not only to train us to sing properly, but to help us grow individually with confidence. Her words of wisdom helped me personally and I can honestly say that I would not be where I am today if it were not for Darlene Filla. She helped me to gain confidence in myself, trust in my beliefs, trust in God and respect for all individuals for their own unique contributions. She believes that there is nothing we (as women) can't do if we put our mind to it and work hard."

The women on hand to support Darlene that evening agreed wholeheartedly, including Judy, Darlene's daughter Tracey Goebel, and Jan Corn. These three plus Darlene have been singing together as Doubletake on and off for over 30 years. The quartet reunited to provide entertainment for the evening.

submitted by Jennifer Northam

Coeur d'Alene Chorus

The [Coeur d'Alene Chorus](#), in North Idaho is delighted to introduce their new director: **Dr. Jay Krumbholz**.

Jay holds a Ph.D. in music theory from the Eastman School of Music and has taught in the music department at Spokane Falls Community College since 2004. He has held teaching positions at Knox College, the Eastman School of Music, the Oberlin Conservatory, and DePauw University.



Jay lives in Spokane and is an active member of the [Barbershop Harmony Society](#) (BHS), singing in the [Pages of Harmony](#), Spokane's male barbershop chorus and in the quartet Dynamix. He is also a Music Category Judge in the BHS and travels across the United States to adjudicate barbershop contests. He has formerly directed barbershop choruses in Missoula, MT, Cleveland, OH, and Davenport, IA.

In the short time since he accepted the directorship, Jay and many of the chorus members have attended the regional Summer Enrichment Training (SET) in Vancouver, BC. They had their first community sing-out as part of Coeur d'Alene's "Art from the Heart", a collaboration of the city's Arts Alliance. Next on their musical agenda is the chorus' long tradition of old-fashioned caroling throughout the community garbed in lavish Victorian costumes. December 1 will be their first annual Christmas concert "Caroling of the Belles".

submitted by Melodie Hayes

Don't miss this weekend workshop with our friends from the Evergreen District. OC Times is the guest faculty! Click [here](#) for more information.

July 23-26: Director's Seminar and Judges Training, "Side by Side"; Marriott Renaissance Center; Detroit, MI. This newly developed SAI program will bring directors and judges together to learn and share. Details and curriculum to be announced.

July 25: InTune Newsletter deadline for summer issue; questions and articles should go to [Nancy Gott](#).

OCTOBER

October 17: InTune Newsletter deadline for fall issue; questions and articles should go to [Nancy Gott](#).

October 20-24: SAI International Convention
Nashville, Tennessee **NEW DATE!**

2010

APRIL

April 22-24: Region 13 Annual Convention (SAI); Anchorage, AK

April 29-May 2: Region 24 Annual Convention (SAI)

Send Calendar info to:

[Tracie Cogdill](#), Calendar Coordinator
PO Box 80007
Fairbanks, AK 99708
Home: 907-457-5244
Fax: 907-456-5244

Region 13 Management Team

Team Coordinator



Chera Boom
907-688-3434
cherab@mtaonline.net

Harmony Northwest Chorus

Arrgh! That's the sound that confronted the audience, along with swords, knives, and pistols, in the opening scene of *"The Deck Is Jumpin', A Pirate Adventure Mystery"*.



Photo credits: In the back, l-r) Jeanette van Merlin, Susan Bradley, Catherine Clausen, Marlene Bennett, Tina Roedell. In the front, l-r) Margie Webster, Mary Duim, Marlene Edmundson, Alice Wiseman. Photo by Lance van Merlin.

Based in Mount Vernon, WA, [Harmony Northwest Chorus](#) (HNWC) headed north this year to put on their show in Bellingham on October 4. The script was written by talented chorus member, Marion Southcott, and chorus members were very pleased that Melody Hall Theatre was packed full of enthusiastic supporters.

Chorus members created their own wonderful variety of pirate outfits that filled the stage. It was even more impressive when the ladies' "crew" of the *Good Ship Harmony* was joined on stage by the [Mount Baker Toppers](#) chorus (BHS). HNWC enjoyed singing many fun songs including these musical parodies: *Pirates Are We*, sung to the tune of *Three Blind Mice*; and, the title song *The Deck Is Jumpin'*, a parody of *The Joint is Jumpin'*.

HNWC has performed in many venues this year including, several senior facilities and a fundraiser for Habitat for Humanity. The chorus will finish up the year with a Christmas Concert on December 7 at the Mount Vernon Community Center, where they meet for rehearsals. On December 21, the chorus will take the stage for the third consecutive year to perform in Stanwood at The Lights of Christmas event at Warm Beach.

submitted by Susan Bradley

Pacific Sound Chorus

"I'm gonna sit right down and write myself an email," sings [Pacific Sound Chorus](#), as we get ready to entertain in the Hawaiian

Communications Coordinator



Susan Soderberg
425.204.5252
susanbass@speakeasy.net

Director's Coordinator



Karen Leet
907-745-8371
ckleet@gci.net

Education Coordinator



Patty Martin
360-754-9450
pgmartin1@comcast.net

Events Coordinator



Sue Hahn
907.272.4245
sourdoughsuesb-b@alaska.com

paradise. We are totally thrilled to be contestant number 13... representing Region 13...in this year's competition, and grateful to all members of the region for your love and support. We are so excited to show off our new director, Susan Kegley, who is making her first appearance in this capacity on the International stage. Of course, she is no stranger to the stage and will be representing the region as the bass of LiveWire, one of the two quartets we claim, with Mojo being the other. We are very proud of both!!

Pacific Sound has worked hard transitioning into a virtually new chorus with Susan at the helm. Our coaches are the best: Betty Clipman, Dale Syverson, Debbie Connelly, and Gail Jencik. Our songs are always in the state of being perfected, our choreographers have us dancing up a storm, our script writers have come up with a cute shtick about computer dating, and our costume folks have us looking top notch. Look for our smiling faces in Honolulu!

submitted by Karen Carter

Voices Northwest Chorus

What a ball!!! [Voices Northwest Chorus](#) scheduled a Ready, Set, Grow program to begin October 13, but it's always hard to predict how many women are going to show up. I thought maybe six or eight; our director, Sue Beck, said to prepare for 20 (frankly, I thought she was crazy...but don't tell her I said so!).

A little before 7:00, they started walking in...and walking in...and walking in. Kim Aikins, our membership chair, was at her table greeting guests and handing out name tags and folders. I pitched in to help because, as one of our guests said, Kim looked like a (really happy) deer in the headlights!

Once our guests were checked in and seated, we regaled them with beautiful barbershop music. Next Sue took the school of Sweet Adeline "gonnabees" off for their first RSG class. On their return, they sang the Mickey Mouse tag with us and joined us in singing *Christmas Chopsticks*, which they hadn't even practiced!

While we broke for treats, I wandered around talking to our guests to find out what they were thinking. I heard "This is great," "I love the energy!" "This is where I belong," "This is what I have been looking for," and "I am meant to be here." Everyone I talked to had a great time and intended to come back the next week. It was wonderful. Who'd a thunk?! Oh, we currently have 30 women in our chorus, and set a goal to expand to 60 by the end of the year. Thirty-two guests showed up, so we're on our way!

submitted by Linda Meyer

[\[return to top\]](#)

Financial Coordinator



Janice McKenna
206-368-5499
brucejan@drizzle.com

Marketing Coordinator



Jan Matthews
907.522.1988
jlm@alaska.net

Membership Coordinator



Cris Turner
509-627-2310
crissings@charter.net

Other Contacts:

Competition Coordinator
[Marshia Nicholson](#) / 253.838.0837

Regional Librarian
[Jean Hansen](#) / 208.772.4776

Regional Calendar Coordinator
[Tracie Cogdill](#) / 907-457-5244

THE PITCH PIPE

The Voice of Sweet Adelines International

Besides the *InTune*, did you know you can also read *The PitchPipe* online?

Yes, SAI's quarterly magazine can be read (usually before you receive it at home!) by clicking this link: [The PitchPipe](#).

Only two issues have been produced online, but both are listed on this page. And don't worry, you'll still continue to receive the printed version in your mailbox at home.

InTune is published quarterly for the membership of North Pacific Region 13, Sweet Adelines International. For questions or comments about this electronic edition, please contact [Sue Middleton](#) at 253.874.2733.

The next issue will be distributed in the winter; deadline is January 10, 2009. We'd love to hear about your chorus or quartet! Send articles to [Nancy Gott](#), **InTune** editor.

Copyright 2008; all rights reserved.



Check us out on the web:

[North Pacific Region 13](#)

